




Impact Roller

Xin Aneng is the leading impact roller manufacturer and supplier in China. Not only does it have cutting-edge R&D technology to make these impact rollers both durable and wear-resistant, but we also have strong production capacity to ensure timely delivery without delay. Your company's production engineering and schedule. Our core expertise of more than 30 years ensures products with rugged design and longest service life. After years of production and operation, we not only have sufficient inventory but can also customize it to meet the needs of different customers. Just choose Xin Aneng and the problem will be solved.

 Send Inquiry



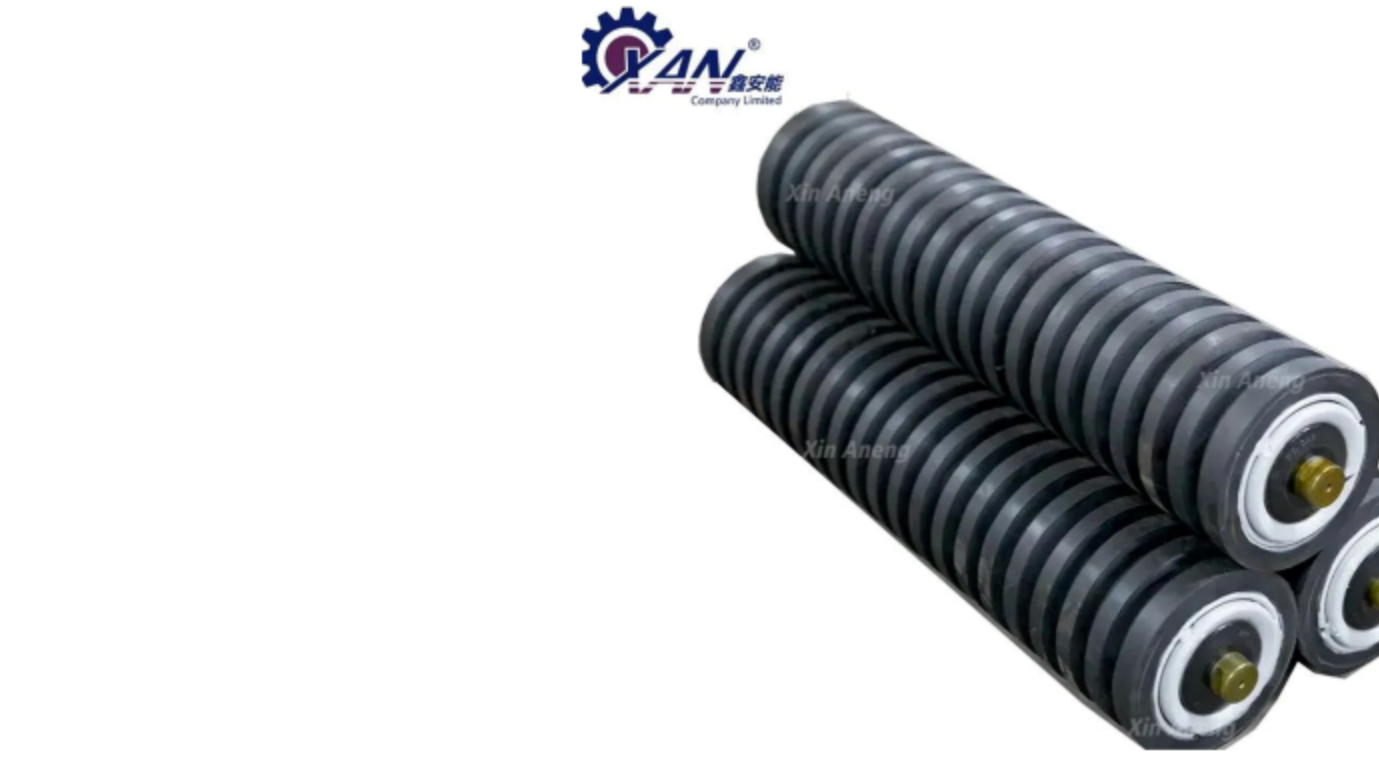
Product Description

In order to solve all the difficulties that your company may encounter when handling materials, Xin Aneng uses its greatest efforts to design and manufacture each impact roller to ensure that your company can achieve the highest efficiency and stability in the workplace. Excellent, and these are what Xin Aneng can do as the best manufacturer and supplier. Below are some product specifications of impact rollers. If you have more needs, please send us an inquiry. Our sales staff will provide you with the most suitable solution as soon as possible.

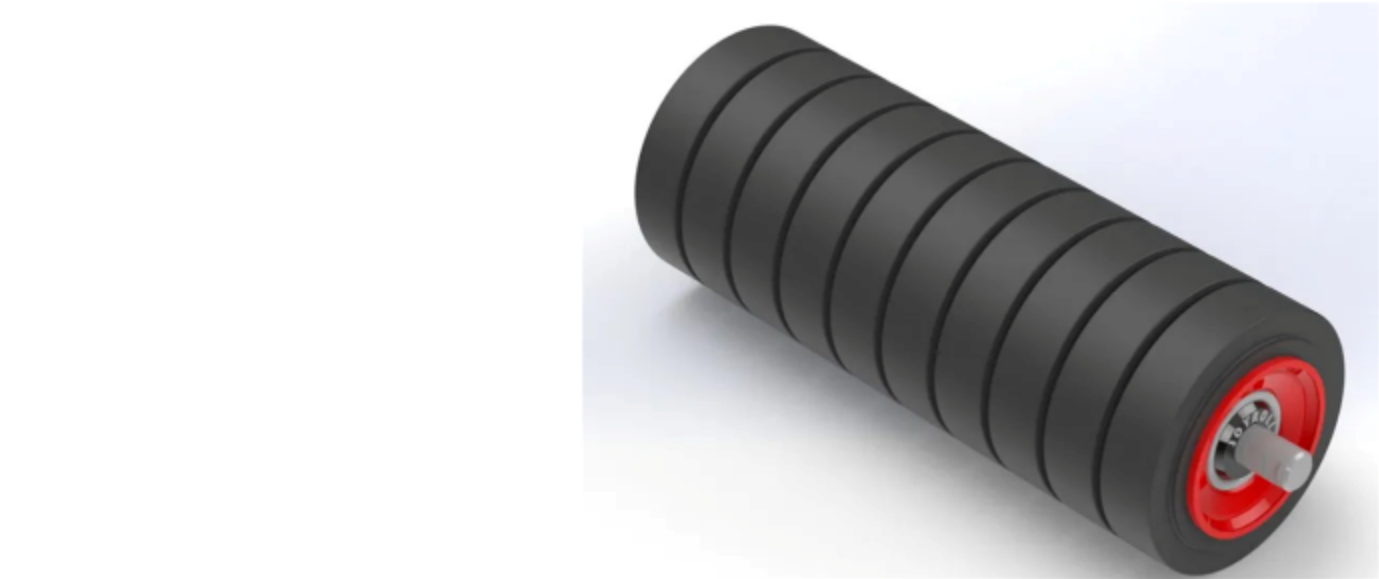
| Belt Width | Type | | Dimension | | | | | | | | Bearing |
|------------|----------|-------|-----------|------|-----|-----|-----|----|----|----|----------|
| | | Φ RD | Φ D | Φ d | L1 | L2 | A | K | B | W | |
| 400 | IR-400 | Φ 90 | Φ 60.3 | Φ 20 | 145 | 175 | 153 | 8 | 11 | 14 | 6204 2RS |
| 450 | IR-450 | | | | 165 | 195 | 173 | | | | |
| 500 | IR-500 | | | | 180 | 210 | 188 | | | | |
| 600 | IR-600-1 | | | | 210 | 240 | 218 | | | | |
| 650 | IR-650 | | | | 225 | 255 | 233 | | | | |
| 600 | IR-600-2 | Φ 115 | Φ 76.3 | Φ 20 | 210 | 240 | 218 | 8 | 11 | 14 | 6204 2RS |
| 750 | IR-750 | | | | 265 | 295 | 273 | | | | |
| 800 | IR-800 | | | | 275 | 305 | 283 | | | | |
| 900 | IR-900 | | | | 315 | 345 | 323 | | | | |
| 1000 | IR-1000 | | | | | | | | | | |
| 1050 | IR-1050 | Φ 140 | Φ 89.1 | Φ 25 | 350 | 390 | 360 | 11 | 15 | 18 | 6205 2RS |
| 1200 | IR-1200 | | | | 370 | 410 | 380 | | | | |
| | | | | | 420 | 460 | 430 | | | | |
| 1400 | IR-1400 | Φ 166 | Φ 114.3 | Φ 30 | 500 | 540 | 510 | 11 | 15 | 22 | 6206 2RS |
| 1600 | IR-1600 | | | | 580 | 620 | 590 | | | | |
| 1800 | IR-1800 | | | Φ 35 | 650 | 690 | 660 | | | 25 | 6207 2RS |
| 2000 | IR-2000 | | | | 730 | 770 | 740 | | | | |
| 2200 | IR-2200 | | | Φ 40 | 800 | 840 | 810 | | | 31 | 6308 2RS |
| | | | | | 880 | 920 | 890 | | | | |
| 2400 | IR-2400 | | | | | | | | | | |



Durable and efficient product design: In the process of designing the impact roller, Xin Aneng presets it to be used in the harshest environments. Through repeated trials and innovations, the impact roller we designed has the best durability and resistance. Abrasive. At the same time, we use the most cutting-edge R&D technology and the most precise processes to manufacture these impact rollers, thus ensuring that the impact rollers meet the highest quality and performance standards. Through all the above steps and diligent work, our impact roller will not only improve the stability of the conveyor system but also ensure the stability of the conveyor system. At the same time, with the guarantee of the long life of the impact roller, your company will reduce the cost of the impact roller. Greater value can be created in terms of maintenance costs and downtime of the conveyor system.



Our impact rollers are not only easy to install but also worry-free to maintain. This is because we took the issue of simple installation into consideration when designing the buffer rollers and spent a lot of time designing and manufacturing to solve this problem, so your company does not need to have too many concerns about this. At the same time, we also solved the compatibility issue to ensure that your company's conveyor can be installed with our impact rollers. At that time, your company can easily install our impact rollers according to the clear installation, operation and maintenance instructions we provide. When it comes to maintenance, your company can further improve the performance and extend the life of your rollers by simply inspecting them regularly and applying proper lubrication.



When facing the different needs of different customers, Xin Aneng can customize solutions for each customer to meet the diverse needs. If you have needs and questions, you can directly send an inquiry to contact our staff. After understanding each customer's unique needs, we provide impact drum solutions tailored to meet your specific application and operating requirements. With strong production capacity and sufficient inventory, we can fully respond to your company's unique needs and ensure that your company's conveyor system operates smoothly and efficiently.

In Xin Aneng 's corporate culture, nothing is more important than quality assurance. We carry out rigorous testing and inspection at every stage of production to ensure that our impact rollers meet the highest quality standards. At the same time, our professional team is always on standby. If you have any questions about the conveyor system, whether it is troubleshooting, maintenance suggestions or customized services, please communicate with us in time. We will respond to your company as soon as possible to solve any problems you may encounter. All questions. As you can see, we not only have the best quality but also the best service. Your company can choose us with confidence and create greater value together.

For over three decades, we have adhered to the philosophy that "excellence is not just a goal, but a habit." We boast an experienced team, many of whom have been with us for over 10 years, bringing unparalleled expertise and dedication to every project. Choosing Xin Aneng means choosing to embark on the journey to excellence together. Below is a glimpse of our factory: